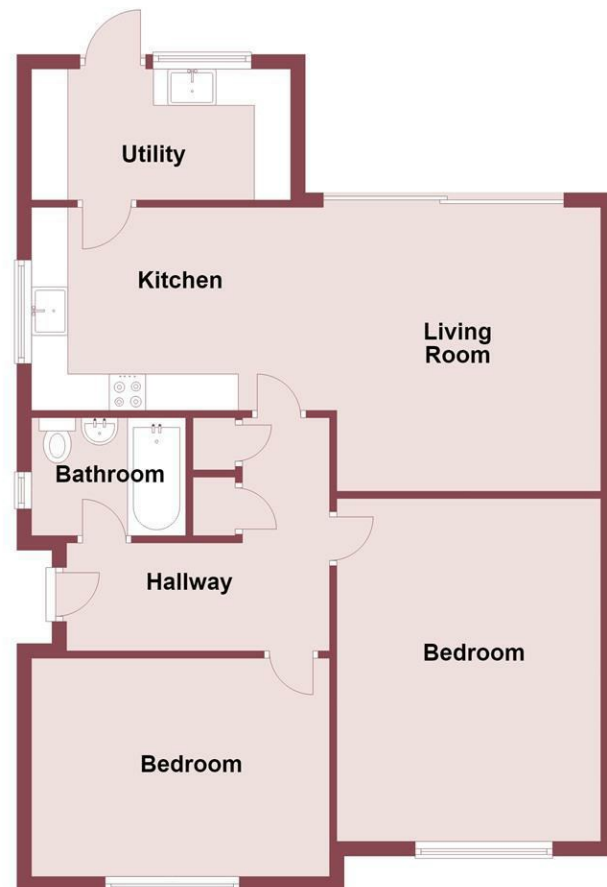




Ground Floor
Approx. 76.2 sq. metres (820.6 sq. feet)



Total area: approx. 76.2 sq. metres (820.6 sq. feet)

Sussex Close, Wirral, CH61 8SY

Offers Over £300,000

2 Bedroom 2 Reception 1 Bathroom D

****Stunning Fully Renovated Two Bedroom Bungalow – Sussex Close, Pensby****

Situated on the highly sought-after Sussex Close in Pensby, this exceptional two-bedroom semi-detached bungalow has been comprehensively renovated to an outstanding standard, offering beautifully presented and contemporary accommodation ready for immediate occupation.

The current owners have undertaken an extensive programme of improvements, creating a stylish and energy-efficient home finished with high-quality fixtures and fittings throughout. Renovation works include a new roof, full external rendering, complete rewire, replacement windows and doors, a utility room extension, new internal doors throughout, and a new bathroom suite.

At the heart of the home is a superb open-plan kitchen and living space, fitted with a bespoke kitchen featuring quartz worktops, a Belfast sink with Quooker boiling water tap, and an impressive range of integrated Neff appliances including a combination microwave oven, second slide-and-hide oven, induction hob, and dishwasher. A practical double bin drawer and American-style fridge freezer (included within the sale) further enhance this impressive space. The adjoining utility room continues the high-quality finish with matching quartz worktops.

The accommodation comprises a welcoming entrance hall, spacious living area OPEN PLAN to the modern high specification kitchen, utility, two bedrooms and a stunning bathroom.

Externally, the property enjoys attractive kerb appeal, with a new garage door due to be fitted in the coming weeks, completing the extensive refurbishment.

Front Entrance

Into;

Hall

Kitchen / Living

26'1" s 12'10" (7.97 s 3.92)

Wall and base units, inset sink, integrated appliances, double glazed windows. Media wall, radiator, power points, double glazed sliding door to garden

Utility

11'5" x 4'11" (3.5 x 1.5)

Space and plumbing for washing machine

Bedroom

15'7" x 11'11" (4.76 x 3.65)

Double glazed window, radiator, power points, fitted wardrobes

Bedroom

13'4" x 9'10" (4.08 x 3.00)

Double glazed window, radiator, power points

Bathroom

Comprising bath with shower above, low level W.C, wash hand basin, towel rail

EXTERNALLY

Front Aspect - Driveway parking for 2/3 cars.

Rear Aspect - Sunny aspect rear garden with patio and lawn.

